

## **Botrytis Stem Rot on chrysanthemum**

This rot often attacks chrysanthemum plants in the center of benches and especially under drips. While the fungus may be present on the base of the plant soon after planting, it usually does not begin killing plants or branches until they near maturity.

The causal organism is the same that causes flower blight—*Botrytis cinerea*. According to Gus Nilsson, terrachlor dusting or spraying of the soil surface and stem base is usually very effective for control of this problem, if the treatment is made early enough. Varieties Hurricane and Iceberg seem especially susceptible.

## **Questions from Growers**

Q. Does chloride interfere with intake of calcium?

A. There has been no indication from our work at CSU that chlorides in the nutrient solution decreases the intake or the tissue level of calcium in carnation.

Q. What, if anything, does interfere with intake of calcium? A. So far we have found that level of calcium in the applied solution is the only important factor influencing level of calcium in the tissue.

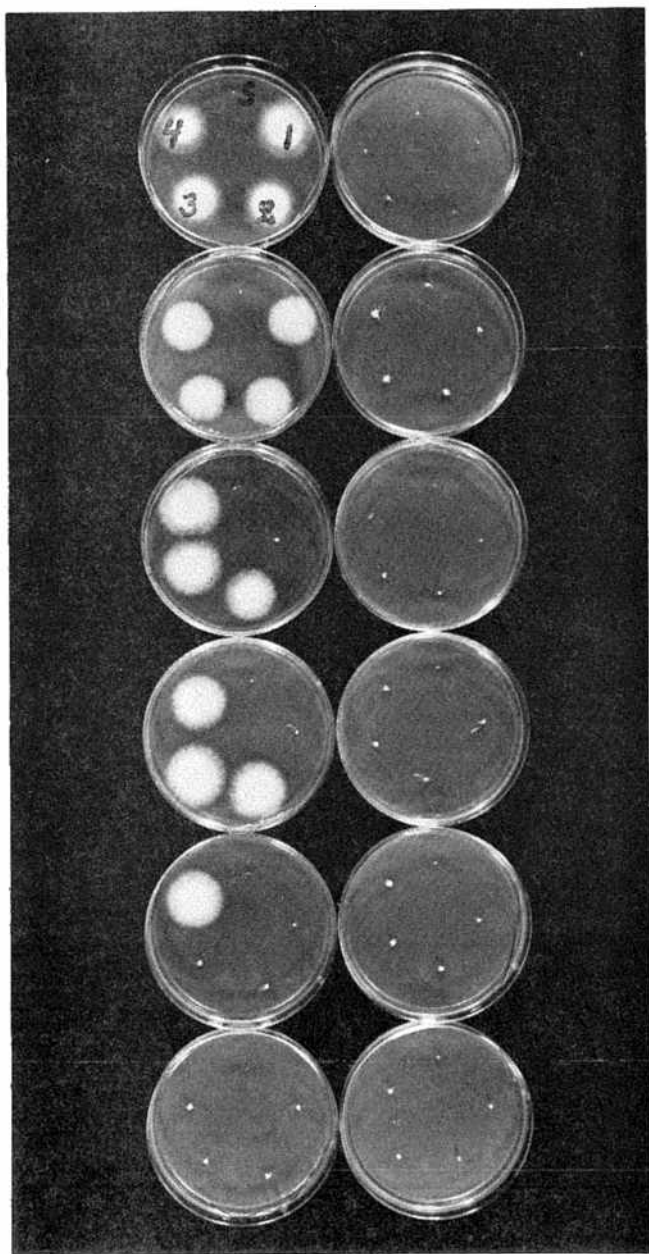


Fig. 1. *Fusarium oxysporum* growing out of some of the sections below the 0.5-1.0 mm shoot-tips. The shoot-tips (S) are all in positions 12 o'clock and the successive lower sections follow clock-wise (1,2,3, and 4). The plates are from 12 different cuttings.