

HIDDEN TREASURE—A UNIQUE SPADIX-LESS ANTHURIUM

A seedling anthurium which produced a flower with a spathe but without a spadix appeared in a cross between UH21 (Asakura White x Haga White) and Nitta. This unique seedling was selected in 1962 (UH157) and retained in our collection as a novelty item. Due to the recent interest of anthurium hobbyists in collecting and growing new and unusual types of anthuriums, we are naming this spadix-less clone 'Hidden Treasure' and releasing it.

'Hidden Treasure' is a compact, miniature plant with short internodes suitable as a potted plant. The coral obake spathe is small to medium, and heart-shaped. The spadix is usually absent, but often hidden in the axil of the leaves, or rarely carried in the near normal position.

The description of this cultivar follows:

Spathe

Size and Shape

Open, heart-shaped, about 4 inches long and 3½ inches wide; lobes curved inward and do not overlap.

Color

Coral with green lobes.

Spadix

Position Usually absent, occasionally located deep in axil of leaves, rarely in normal position.

Size 1½ inches long, ¼ inch thick.

Color Yellow, changing to white.

Flower Stem

8 inches long and channeled, unlike the typical peduncle; cylindrical when spadix is carried in normal position.

Sucker Production

Fair.

Internode Length

Short, resulting in a compact plant.

Stature

Short and compact, miniature to small plant.

H. Kamemoto, J. Kunisaki and T. Higaki
Department of Horticulture, U.H.



Figure 1. Hidden Treasure—No Spadix.

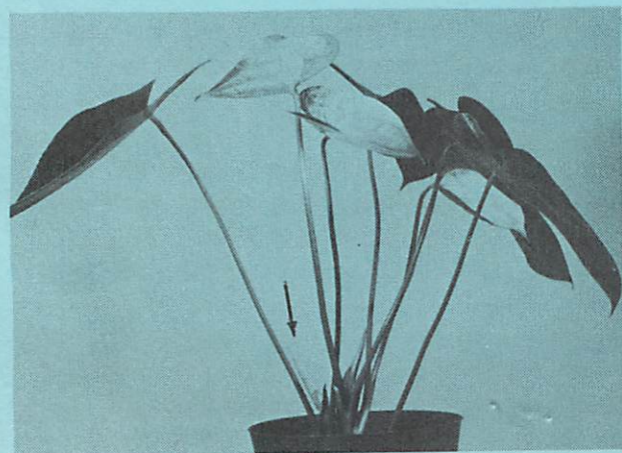


Figure 2. Hidden Treasure—Hidden Spadix at Axil on Leaves. Arrow Points to the Spadix.

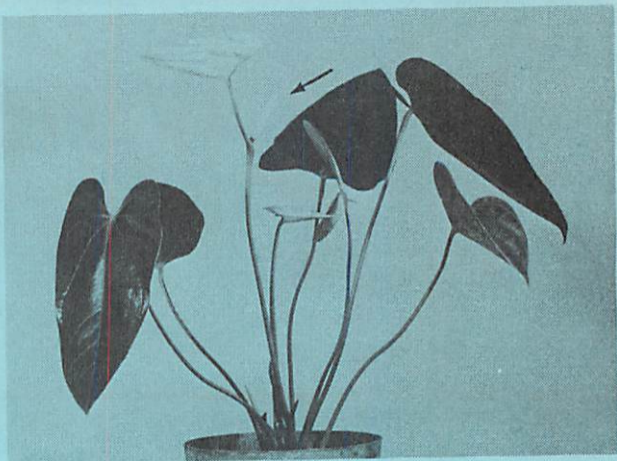


Figure 3. Hidden Treasure—Spadix Carried at Near Normal Position. Arrow Points to the Spadix.