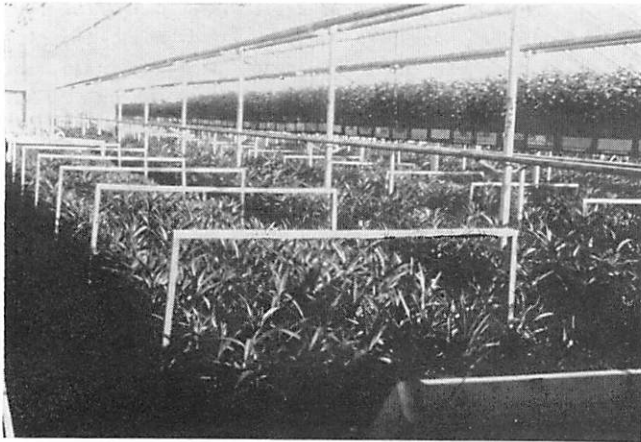


# How To Get Short Lilies

Charles Yunck, C. Yunck Nurseries, Newtonville  
as told to  
Charles Williams, Regional Horticultural Agent  
Capitol District

Charlie Yunck has always grown tall lilies, and last Easter he was determined he would do something to have a few short lilies. The two things he had read about were chemicals and shading. He decided to really make a trial of this so he used both methods. Bulbs were selected from different jobbers and placed in 3 treatments; chemical treatment, shading treatment, and a normal treatment.

The chemical treatment was made when the average shoot was about 6 inches tall. He mixed 14 quarts of Phosphon S in 200 gallons of water and sprayed the plants. The shading treatment was started as soon as the shoots emerged. The plants were covered with black cloth at 5 pm and it was removed at 8 am (Figure 1). The normal treatment was the general good cultural method used at Yunck's.



**Figure 1.** The Bench of lilies showing the braces used to hold the black shade cloth.

It was very quickly apparent something was happening in both the chemical and shade treatment. Plants were not as tall as the normal plants. Just before sale, a random sample of the plants was selected for measurement and photographs. The results can be seen in Table 1 and figures 2 and 3. A rather interesting observation was made concerning the shade treatment. There were two groups of plants, one group was shorter than the other and this was designated as tall shade and short shade. The reasons for this were not known.

It was obvious the trials were successful, and Charlie was able to get his short lilies. The photographs testify to the quality of the lilies, be they either short or tall.



**Figure 2.** Plants from the various treatments (left to right): normal, shade (tall), shade (short), and chemical.

**Table 1.** The height of lilies grown under 3 treatments.

<i>Treatment</i>	<i>Height*</i> (In)
Normal	32.8
Chemical	21.3
Shade (Short)	29.2
Shade (Tall)	27.6

\*The plants were measured from the rim of the pot to the point where the upper bud bent down.



**Figure 3.** Charlie Yunck holding a tall and short lily.