

WIPE OUT WEEDS

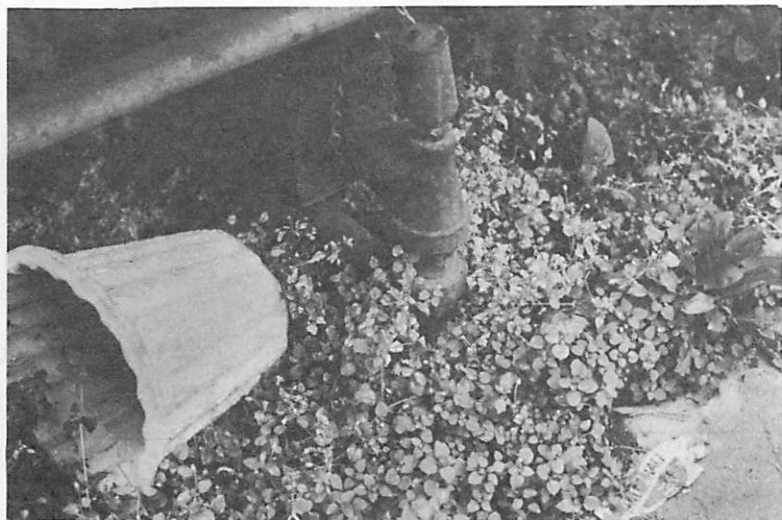
Carl A. Salsedo

Extension Agent - Horticulture

A weed is considered to be any plant that is growing where it shouldn't be or more precisely, "A rose growing in a potato patch" (Stan Papanos, 1976), could be in its context considered a weedy species. Weeds in the greenhouse are unsightly and are competitive with crops for resources such as water, nutrients and light. They also perpetuate themselves by seeds and harbor insects and diseases. Sanitation practices and use of herbicides in the greenhouse can wipe out weeds.

Control of Weeds under Greenhouse Benches and Around Greenhouses

Weeds which harbor harmful insects under benches and around greenhouses should be destroyed. Do not use a herbicide in the greenhouse or other plant pro-



duction areas unless it is specifically recommended for this use. Remember when using herbicides, do not allow the material to get on crop plants or heating pipes. The table on the next page lists those herbicides recommended for use under greenhouse benches and around greenhouses.

Paraquat is very toxic to humans. Wear rubber boots and gloves when applying with sprinkling can or coarse spray. Do not allow employees to walk in the greenhouse until the material is dry.

Weedy areas around the greenhouse are sources of weed seeds, insects and diseases which may enter greenhouses and other production areas. A program of mowing and chemical weed control with herbicides adjacent to the greenhouse will greatly reduce the weed problem and improve the appearance.

Many soil sterilization methods and materials for nematode and disease control are also effective for controlling weeds. Steam, methyl bromide,



Herbicide	Trade Name	Rate (In 1 gallon water on 400 sq. ft.)		Residual Action and Recommended Use
		oz.	tbsp.	
Diuron	Karmex (Monuron or Telvar may be substituted.)	1/2	1	Up to several years. Effective against young weeds. Do not place pots or flats on soil treated with this herbicide.
Paraquat*	Paraquat (Diquat may be substituted)	1/3	2	None. Very effective as a con- tact herbicide killing almost everything that is green.
Simazine	Simazine	2	10	Seasonal. Same as diuron.
Sodium arsenite	Sodium arsenite		5	Without residual activity, these materials are not suggested.
Stoddard solvent	Varsol Sovasol			Without residual activity, these materials are not suggested.

*If using a sprayer, avoid inhaling any mist.

chloropicrin, Eptam (EPTC), Vapam and Mylone are effective for preplant treatments in frames and beds.

In summary, the best method is placing 1 tbsp. Paraquat and a rounded tbsp. diuron or simazine in a 2 1/2-3 gallon sprinkling can with water after putting on rubber boots and gloves. Apply to weedy areas. Repeat every couple of weeks. In a month or so, you will wipe out weeds. ?